



TM4SF1 Polyclonal Antibody

Catalog No	YP-Ab-13968
Isotype	IgG
Reactivity	Human;Mouse
Applications	IHC;IF;ELISA
Gene Name	TM4SF1
Protein Name	Transmembrane 4 L6 family member 1
Immunogen	The antiserum was produced against synthesized peptide derived from human T4S1. AA range:1-50
Specificity	TM4SF1 Polyclonal Antibody detects endogenous levels of TM4SF1 protein.
Formulation	Liquid in PBS containing 50% glycerol, 0.5% BSA and 0.02% sodium azide.
Source	Polyclonal, Rabbit,IgG
Purification	The antibody was affinity-purified from rabbit antiserum by affinity-chromatography using epitope-specific immunogen.
Dilution	IHC: 1/100 - 1/300. ELISA: 1/20000.. IF 1:50-200
Concentration	1 mg/ml
Purity	≥90%
Storage Stability	-20°C/1 year
Synonyms	TM4SF1; M3S1; TAAL6; Transmembrane 4 L6 family member 1; Membrane component chromosome 3 surface marker 1; Tumor-associated antigen L6
Observed Band	
Cell Pathway	Membrane; Multi-pass membrane protein. Colocalizes with SDCBP2 in the apical region of the cell (PubMed:11102519).
Tissue Specificity	Highly expressed in lung, breast, colon and ovarian carcinomas. It is also present on some normal cells, endothelial cells in particular.
Function	similarity:Belongs to the L6 tetraspanin family.,subunit:Present in high molecular weight complexes in tumor cells.,tissue specificity:Highly expressed on lung, breast, colon, and ovarian carcinomas. It is also present on some normal cells, endothelial cells in particular.,
Background	The protein encoded by this gene is a member of the transmembrane 4 superfamily, also known as the tetraspanin family. Most of these members are cell-surface proteins that are characterized by the presence of four hydrophobic domains. The proteins mediate signal transduction events that play a role in the regulation of cell development, activation, growth and motility. This encoded protein is a cell surface antigen and is highly expressed in different carcinomas. [provided by RefSeq, Jul 2008],

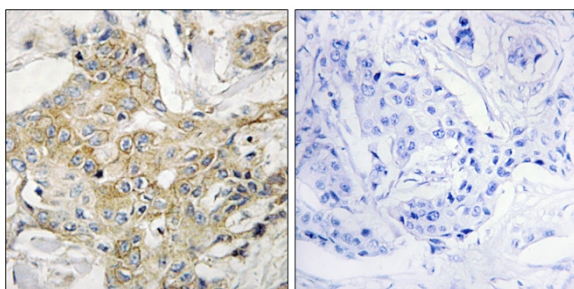
matters needing attention

Avoid repeated freezing and thawing!

Usage suggestions

This product can be used in immunological reaction related experiments. For more information, please consult technical personnel.

Products Images



Immunohistochemistry analysis of paraffin-embedded human breast carcinoma tissue, using T4S1 Antibody. The picture on the right is blocked with the synthesized peptide.